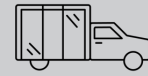
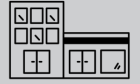




We Show Up



We Bring It



We Do It Right

St. Olaf Residence Hall

St. Olaf College, located in Northfield Minnesota, needed to build a new 300-bed residential hall on the south side of its campus. This project is addressing a three-decade-long housing shortage on campus and improving the residential experience for all St. Olaf students.

THE CHALLENGE

The residence hall at St. Olaf was a complicated job with multiple glazing systems. The project required the installation of high-performance windows along with complex exterior details. The challenge for the contractor, Boldt Construction, was finding a partner who could complete the job on an aggressive schedule in order to accommodate incoming students in fall of 2022.

OUR SOLUTION

Brin worked with the team at Boldt Construction to execute the installation of architectural window systems with heavy gauge welded aluminum plate surrounds, as well as high-performance curtainwall and storefront systems. Additionally, Brin provided mirrors and interior glazing for all residence hall dorm rooms and townhome units.

RESULTS ACCOMPLISHED

The Brin Contract Glazing team was able to show up and bring the skilled labor to get the project done on time. The team engineered a custom shroud detail at the window perimeter to provide a termination point for the stone facade. Brin was able to produce a design that was both functional and aesthetically pleasing to achieve the design intent.

Why was Brin Glass best suited for the work?

Brin Contract Glazing was best suited for the work because the team had the resources to complete the enclosure scope on schedule, allowing the client hit their end date goal.

Boldt Construction

Contact

Jason Weld

Project Start May 2021

Project End August 2022

Executed By

Brin Contract Glazing



Current progress shot



End result goal