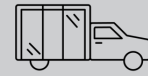
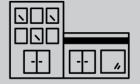




We Show Up



We Bring It



We Do It Right

Getting the Right Fit for the Cabin Kit

When developing Cabin Kitt modules, Joe Hutchence of Cedar Bound, needed to ensure he had the correct specifications for their uniquely designed cabin doors and windows. This family-run business in Northern Minnesota provide these designs as buildable cabin kits.

THE CHALLENGE

Due to the unique nature of the construction requirements, Cedar Bound needed to make sure they had a reliable glass partner with expertise in consultation for their door and window needs.

OUR SOLUTION

After extensive communication with the business owner, St. German's Glass worked closely with Cedar Bound to determine the correct materials and pricing needed for each of their unique kit options.

RESULTS ACCOMPLISHED

When it comes to windows and doors, Cedar Bound now can fully furnish their buildable cabin kit modules and do so knowing that they have St. German Glass to help with any of their glass needs.

Why was Brin Glass best suited for the work?

With St. Germain's Glass located close to the Cedar Bound headquarters, one-on-one support was easy and responsive. St. Germain's Glass also has a deep knowledge of both the products and resources needed and was able to secure the materials for Cedar Bound.

Cedar Bound

Contact

Joe Hutchence

Project Start February 2021

Project End Ongoing

Executed By St. Germain's Glass

