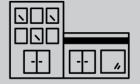




We Show Up



We Bring It



We Do It Right

Brin was the clear choice for flexible design and reliable pricing on a new, multi-family housing complex

For this project, Brin Glass Company provided 24 shower enclosures for a group of three 8-plexes built by Troseth Companies, a general contractor based in Princeton, Minnesota.

THE CHALLENGE

Troseth Companies needed a reliable partner who was able to offer guaranteed pricing to install the shower glass and hardware for three newly constructed 8-plex buildings over a 15-month period.

OUR SOLUTION

St. Germain's Glass, a subsidiary of Brin, worked closely with Troseth Companies to establish the pricing and initial plans for the shower layouts. The team then followed up with three project managers at Troseth to execute the installations.

RESULTS ACCOMPLISHED

By taking a new business relationship and working collaboratively with everyone involved to execute a long-term plan, Brin generated a positive outcome for the client.

Why was Brin Glass best suited for the work?

Brin's team was flexible to work with the customer through the design and build process. They were able to accommodate changes in dimensions and layout while staying true to the original agreement, and by offering a good value for the new shower designs as they evolved.

Troseth Companies

Contact

Wayne Troseth, CEO
Troseth Companies

Project Start August 2019
Project End January 2021

Executed By St. Germain's Glass



Above:
Before

Right:
One of the 24 shower enclosures after installation

